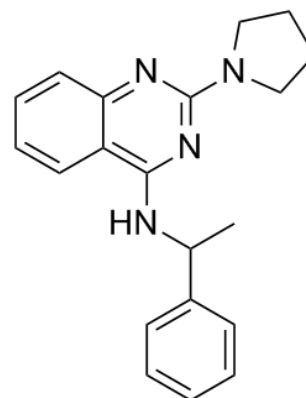


Product Name : Importazole
Cat. No. : PC-42312
CAS No. : 662163-81-7
Molecular Formula : C₂₀H₂₂N₄
Molecular Weight : 318.41548
Target : Other Targets
Solubility : DMSO: ≥ 33 mg/mL



Biological Activity

Importazole is a specific, cell permeable transport receptor **Importin-β** inhibitor that disrupts Ran GTP/importin-β interaction.

Importazole specifically blocks importin-β-mediated nuclear import both in *Xenopus* egg extracts and cultured cells, without disrupting transportin-mediated nuclear import or CRM1-mediated nuclear export.

Importazole impairs mitotic cargo release and disrupts mitotic spindles in cells.

References

Soderholm JF, et al. *ACS Chem Biol*. 2011 Jul 15;6(7):700-8.

Bird SL, et al. *Mol Biol Cell*. 2013 Aug;24(16):2506-14.

Bai L, et al. *Cell Signal*. 2014 May;26(5):857-67.

Yan W, et al. *Cell Signal*. 2015 Apr;27(4):851-9.

Caution: Product has not been fully validated for medical applications. Lab Use Only!

E-mail: tech@probechem.com